



Wear-Resistant Bucket elevator chain

내마모성 버킷 엘리베이터 체인

A regular wear resistant conveyor chain is made from quenched and tempered alloy steel. But this <Wear-Resistant Bucket elevator chain> made from specially selected alloy steel for the unique combination of demands from the application. Dong Bo has developed a special solution after a lot of experiment. For example, components (bush, pin, roller) are ideally combined in point of dimensions, clearance and hardness. This concept enable that the chain can extend its life up to 2times that of regular wear resistant conveyor chains.

Applications

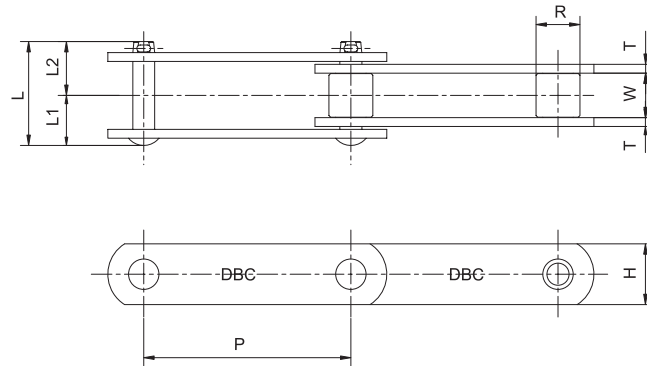
Cement Works, Coal Mining, Iron Works, Glass Industry, Heavy duty conveying applications, etc.

특징

종래의 일반형 내마모형 체인은 합금강을 소입, 소려처리해서 사용했었습니다. 초내마모 컨베이어 체인은 다년간의 실험 및 각종 현장 시험결과를 토대로 그 사용조건에 따라서, 핀은 표면 경화 처리, 부쉬 및 로울러는 특수 고합금강을 최적의 경도차로 조합한 것으로서 각 부품간의 클리어런스는 특수하게 설계되어 있습니다. 이러한 개선으로 인해 이 체인은 종래의 일반형 내마모 컨베이어 체인에 비해서 2배 이상의 마모수명이 보증됩니다.

용도

CEMENT공업, 유리요업, 채광, 제철공업
기타 마모에 대하여 가혹한 환경의 경우등.



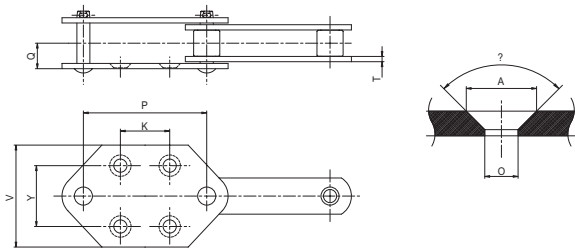
Unit :mm

DONG BO CHAIN NO.	pitch P	Avg. Breaking Load				Roller Dia. R	Inner width W	Plate		Pin			approx weight (kg/m)
		CN Type	CH Type	CC Type	CE Type			H	T	L ₁	L ₂	L	
DBC WB10150S	150	11,500	23,000	11,500	21,500	29	30	38.1	6.3	33	36	69	5.4
DBC WB12006S	152.4	19,000	28,500	19,000	28,500	34.9	37.1	44.5	7.9	40.5	43	83.5	8.6 7.8
DBC WB12200S	200												
DBC WB17200S	200	25,000	39,500	25,000	39,500	40.1	51.4	50.8	9.5	51.5	58	109.5	11.6 10.7
DBC WB17250S	250												
DBC WB26200N	200	30,500	57,500	30,500	52,000	50.8	57.2	63.5	9.5	56	61	117	16.2 14.7
DBC WB26250N	250												
DBC WB26300N	300												
DBC WB36250S	250	-	88,500	-	87,000	57.2	66.7	76.2	12.7	69	78	147	23.7 22.1
DBC WB36300N	300												
DBC WB36350N	350												
DBC WB60300N	300	-	106,000	-	96,000	70	77	90	12.7	88	84	172	29.7 27.8
DBC WB60350N	350												
DBC WB60400N	400												
DBC WB90350N	350	-	166,000	-	151,000	85	88	110	16	101.5	95.5	197	45.9 43.4
DBC WB90400N	400												
DBC WB20400N	400	-	225,000	-	206,000	100	100	130	19	119.5	108	227.5	63.5

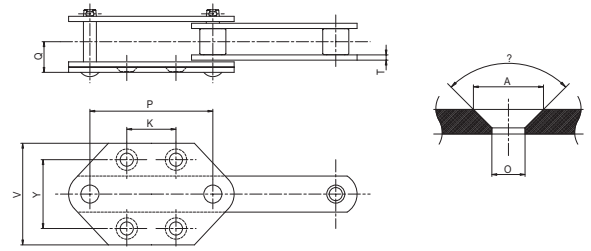
Wear-Resistant Bucket elevator chain

내마모성 버킷 엘리베이터 체인

G-4 Attachment Type



G-4 Double Attachment - plate Type



G-4 Attachment Type

unit : mm

Basic Chain No.	pitch P	Dimensions									Add. Weight per Attachment (at every second Link spacing) (kg/m)
		V	K	Y	T	Q	A	O	θ		
DBC	WB10150S	150	110	75	70	6.3	28.5	26	15	90°	7.0
	WB12006S	152.4	110	75	70	7.9	35.5	26	15	90°	11.0
	WB12200S	200	120	100	80						9.9
	WB17200S	200	120	100	80	9.5	45.5	26	15	90°	13.9
	WB17250S	250	150	140	100			32	19	90°	14.0
	WB26200N	200	120	100	80	9.5	48	26	15	90°	18.3
	WB26250N	250	150	140	100			32	19	90°	17.8
WB36250N	250	150	140	100	12.7	60	32	19	90°	27.5	

G-4 Double Attachment - Plate Type

unit : mm

Basic Chain No.	pitch P	Dimensions									Add. Weight per Attachment (at every second Link spacing) (kg/m)
		V	K	Y	T	Q	A	O	θ		
DBC	WB26300N	300	200	170	140	12	60	38	24	90°	22.5
	WB36300N	300	200	170	140	12	72	38	24	90°	31.4
	WB36350N	350	240	200	170	12	72	40	28	60°	31.2
	WB60300N	300	200	170	140	12	77	38	24	90°	39.5
	WB60350N	350	240	200	170	12	77	40	28	60°	38.8
	WB60400N	400	280	230	200	16	81	50	35	60°	42.8
	WB90350N	350	240	200	170	12	89.5	40	28	60°	57.8
	WB90400N	400	280	230	200	16	93.5	50	35	60°	60.8
	WB20400N	400	280	230	200	16	105.5	50	35	60°	82.2



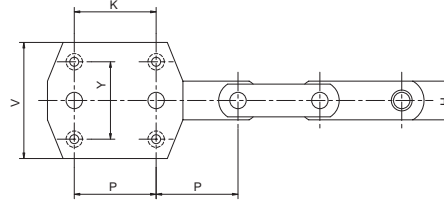
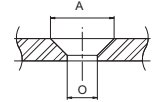
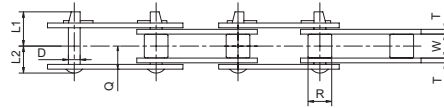
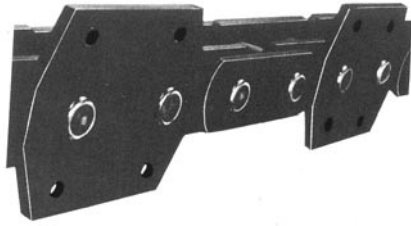
Chains for high - Speed Bucket Elevator

고속 버킷 엘리베이터 체인

This chain is specially designed for high-speed bucket elevator and has excellent, Wear life, Strength and Fatigue strength

수송물을 수직으로 고속운반하는 고속의 버킷 엘리베이터에 사용됩니다.

강도, 내충격성, 내피로성이 우수합니다.



unit : mm

DONG BO CHAIN NO.	pitch P	Roller Dia R	Inner width W	Pin			Plate		Attachment Dimensions						Arg. Breaking load (kgf)	Weight (kg/m)	
				D	L ₁	L ₂	T	H	V	K	Y	Q	A	O		non attached	with attachment
DBC HB23100	100	44.5	51.8	19.05	59.8	51.7	9	50	150	100	105	45.5	33	18	23,000	17.5	20.4
DBC HB32100	100	50.8	57.6	22.2	62.8	55.7	9	65	150	100	105	48.5	33	18	32,000	24.7	27.3
DBC HB33100	100	44.5	51.8	22.2	60.2	53.8	9	57	150	100	105	45.5	33	18	33,000	19.0	21.7
DBC HB50100	100	50.8	57.6	25.4	64.2	57.3	9	75	150	100	150	48.5	33	18	50,000	26.2	28.6
DBC HB50125	125			180				125	130	23.0	26.1						
DBC HB75125	125	63.5	67.4	31.8	78.0	70.0	12	90	180	125	130	60	33	18	75,000	41.9	46.1
DBC HB75150	150							220	150	170	37.6					42.7	
DBC HB75175	175							230	175	180	34.5					39.7	
DBC HB100125	125	70	75	35	90.8	83.2	16	100	180	125	130	72	39	22	100,000	63.3	68.1
DBC HB100150	150							230	150	170	56.7					63.9	
DBC HB100175	175							240	175	180	52.0					59.3	
DBC HB120125	125	75	82.5	38.5	95.5	88.0	16	115	200	125	150	76	39	22	120,000	74.6	79.8
DBC HB120150	150							230	150	170	68.3					75.1	
DBC HB120175	175							240	175	180	62.5					69.4	
DBC HB140150	150	82	85	41.75	99.3	90.2	16	125	230	150	170	77	39	22	140,000	81.3	87.8
DBC HB140175	175							250	175	180	74.0					81.1	
DBC HB160175	175	86	92.5	44.5	110.3	101.2	19	130	250	175	180	87	42.2	26	160,000	91.6	99.9
DBC HB200175	175	97	95	50.8	114.0	103.5	19	150	260	175	195	88.5	42.2	26	200,000	119.3	134.2

