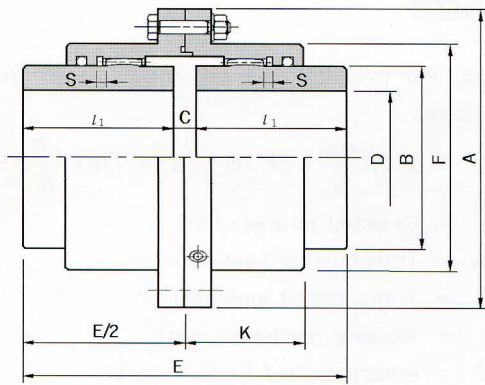
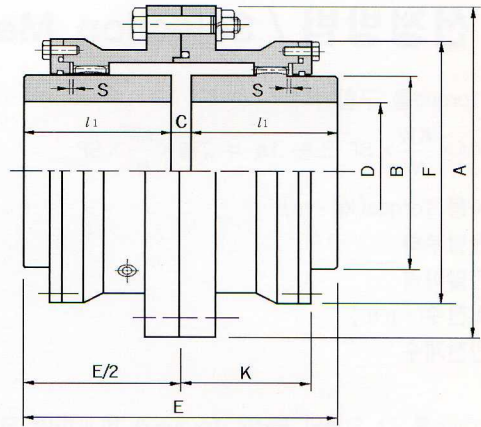


표준품 규격 / Dimensions

Jac-SSM

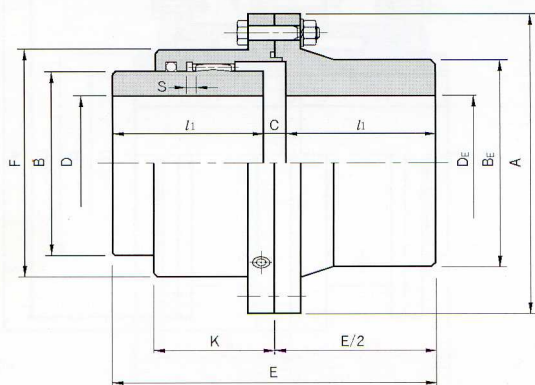


Jac-CCM

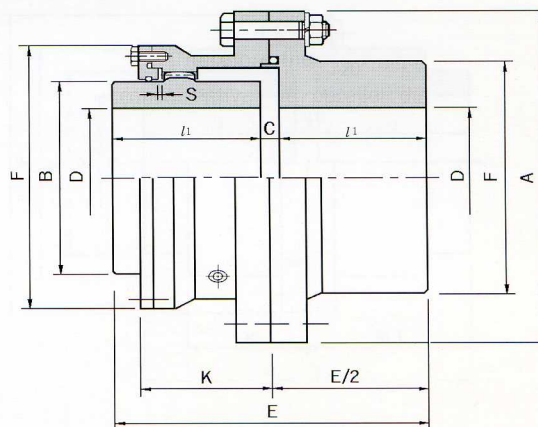


SIZE	Torque Rating (kg-m)	Max Speed (rpm)	Dimensions(mm)									GREASE Q'TY (l)	WT (kg)	GD ² (kg-m ²)
			Bore D		E	l ₁	C	B	F	K	S			
			Min	Max										
SSM 112	57.3	4000	17	40	108	50	8	58	79	40	2	0.055	4.3	0.0198
SSM 125	101.6	"	22	50	134	63	8	70	92	43	2.5	0.072	6.6	0.0353
SSM 140	146.3	"	22	56	150	71	8	80	107	47	2.5	0.11	9.3	0.0612
SSM 160	223.9	"	22	65	170	80	10	95	120	52	3	0.14	14	0.113
SSM 180	343.8	"	32	75	190	90	10	105	134	56	3	0.18	19	0.191
SSM 200	491.0	3810	32	85	210	100	10	120	149	61	3	0.24	26	0.315
SSM 224	713.3	3410	42	100	236	112	12	145	174	65	4	0.36	39	0.599
SSM 250	961.9	3050	42	115	262	125	12	165	200	74	4	0.53	55	1.08
SSM 280	1666	2720	42	135	294	140	14	190	224	82	4.5	0.69	80	2.06
SSM 315	2626	2420	100	160	356	170	16	225	260	98	5.5	1.1	129	4.24
SSM 355	3954	2150	125	180	396	190	16	250	288	108	5.5	1.3	177	7.13
SSM 400	5555	1900	140	200	418	200	18	285	329	114	6.5	2.0	242	12.5
CCM 450	7520	1690	140	205	418	200	18	290	372	151	5	2.6	298	16.6
CCM 500	11830	1520	170	236	494	236	22	335	424	168	6	3.8	446	36.9
CCM 560	16970	1360	190	275	552	265	22	385	472	187	6.5	4.6	642	67.6
CCM 630	26500	1210	224	325	658	315	28	455	544	213	8	6.7	1010	137
CCM 710	38000	1070	250	360	738	355	28	510	622	242	8.5	9.4	1440	250
CCM 800	54430	950	280	405	832	400	32	570	690	267	9.5	13	2030	441
CCM 900	82000	840	315	475	932	450	32	670	762	295	10.5	17	3030	860
CCM 1000	113000	760	355	510	1040	500	40	720	858	322	12	23	4120	1380
CCM 1120	165000	682	400	600	1160	560	40	840	990	360	13	31	5920	2650
CCM 1250	212000	610	500	710	1460	710	40	960	1126	399	14	45	9410	5290

Jac-SEM



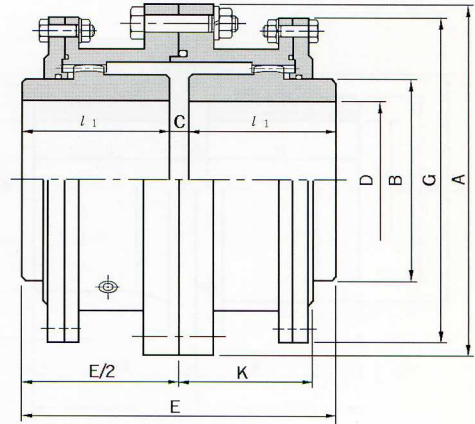
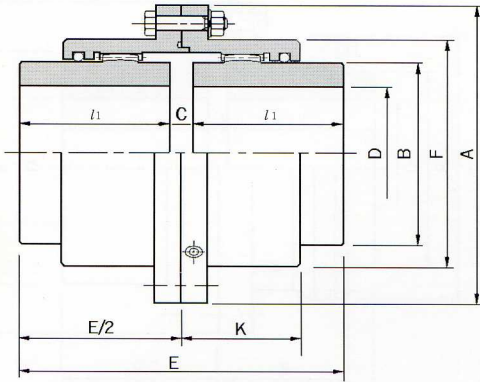
Jac-CEM



SIZE	Torque Rating (kg-m)	Max Speed (rpm)	Dimensions(mm)													GREASE Q'TY (l)	WT (kg)	GD ² (kg · m ²)
			Bore D		Bore D _E		E	l ₁	C	B	F	K	B _E	S				
			Min	Max	Min	Max												
SEM 112	57.3	4000	17	40	17	50	108	50	8	58	79	40	70	2	0.042	4.6	0.0197	
SEM 125	101.6	"	22	50	22	56	134	63	8	70	92	43	80	2.5	0.056	6.7	0.0348	
SEM 140	146.3	"	22	56	22	63	150	71	8	80	107	47	90	2.5	0.085	9.3	0.0591	
SEM 160	223.9	"	22	65	22	75	170	80	10	95	120	52	105	3	0.11	14	0.111	
SEM 180	343.8	"	32	75	32	80	190	90	10	105	134	56	115	3	0.14	19	0.183	
SEM 200	491.0	3810	32	85	32	95	210	100	10	120	149	61	135	3	0.18	26	0.317	
SEM 224	713.3	3410	42	100	42	105	236	112	12	145	174	65	150	4	0.29	38	0.579	
SEM 250	961.9	3050	42	115	42	125	262	125	12	165	200	74	180	4	0.41	56	1.08	
SEM 280	1666	2720	42	135	42	150	294	140	14	190	224	82	210	4.5	0.56	83	2.14	
SEM 315	2626	2420	100	160	100	180	356	170	16	225	260	98	250	5.5	0.90	135	4.55	
SEM 355	3954	2150	125	180	125	200	396	190	16	250	288	108	275	5.5	1.1	184	7.50	
SEM 400	5555	1900	140	200	140	236	418	200	18	285	329	114	325	6.5	1.6	261	14.1	
CEM 450	7520	1690	140	205	140	225	418	200	18	290	372	151	320	5	2.1	304	18.2	
CEM 500	11830	1520	170	236	170	270	494	236	22	335	424	168	380	6	3.1	453	37.0	
CEM 560	16970	1360	190	275	190	305	552	265	22	385	472	187	430	6.5	3.8	664	70.0	
CEM 630	26500	1210	224	325	224	355	658	315	28	455	544	213	500	8	5.8	1020	139	
CEM 710	38000	1070	250	360	250	400	738	355	28	510	622	242	565	8.5	7.8	1460	252	
CEM 800	54430	950	280	405	280	450	832	400	32	570	690	267	635	9.5	11	2090	451	
CEM 900	82000	840	315	475	315	510	932	450	32	670	792	295	715	10.5	14	3020	743	
CEM 1000	113000	760	355	510	355	570	1040	500	40	720	858	322	800	12	20	4130	1440	
CEM 1120	165000	682	400	600	400	640	1160	560	40	840	990	360	900	13	26	5970	2810	
CEM 1250	212000	610	500	710	500	800	1460	710	40	960	1126	399	1060	14	37	9820	5630	

Jac-GD

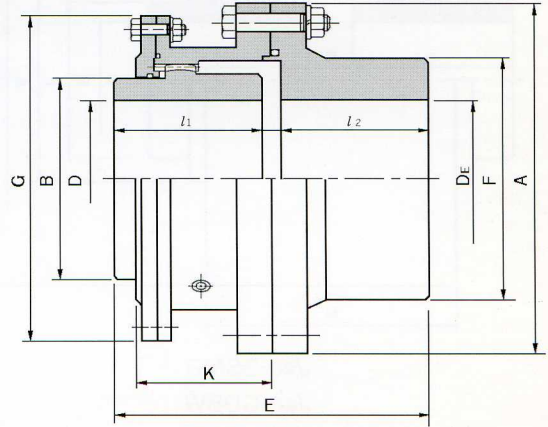
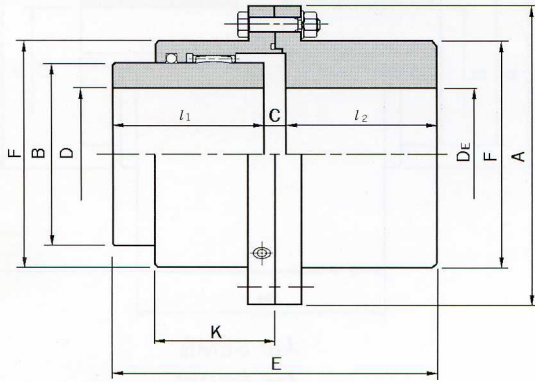
Jac-GDL



Size	HP Per 100 rpm	Max. Speed (rpm)	Basic Torque (kg · cm)	Bore D(mm)		Dimensions(mm)							C	Cplg wt(kg)	Grease wt(kg)
				Max	Min	A	E	l_1	B	F	K	G			
10GD	12	8,000	8,594	48	13	116	89	43	69	84	39		3	4.5	0.04
15GD	27	6,500	19,337	60	19	152	101	49	86	105	48		3	9.1	0.07
20GD	50	5,600	35,810	73	25	178	127	62	105	126	59		3	15.9	0.11
25GD	90	5,000	64,458	92	32	213	159	77	131	155	72		5	29.5	0.23
30GD	150	4,400	107,430	105	38	240	187	91	152	180	84		5	43.1	0.36
35GD	230	3,900	164,726	124	51	279	218	106	178	211	98		6	68.0	0.54
40GD	350	3,600	250,670	146	64	318	248	121	210	245	111		6	97.5	0.91
45GD	480	3,200	343,776	165	76	346	278	135	235	274	123		8	136.1	1.04
50GD	650	2,900	465,530	178	89	389	314	153	254	306	141		8	190.5	1.77
55GD	850	2,650	608,770	197	102	425	344	168	279	334	158		8	249.5	2.22
60GD	1,100	2,450	787,820	222	114	457	384	188	305	366	169		8	306.2	3.18
70GD	1,600	2,150	1,145,920	254	89	527	451.5	221	343		196	517	9.5	485.4	4.35
80GDL	2,100	1,750	1,504,020	279	102	591	507.5	249	356		243	572	9.5	703.1	9.53
90GDL	2,850	1,550	2,041,170	305	114	660	565	276	394		265	641	13	984.3	12.25
100GDL	4,000	1,450	2,864,800	343	127	711	623	305	445		294	699	13	1302.0	14.97
110GDL	5,500	1,330	3,939,400	387	140	775	679	333	495		322	749	13	1678.3	17.69
120GDL	7,000	1,200	5,013,400	425	152	838	719	353	546		341	826	13	2113.8	20.87

Jac-GS

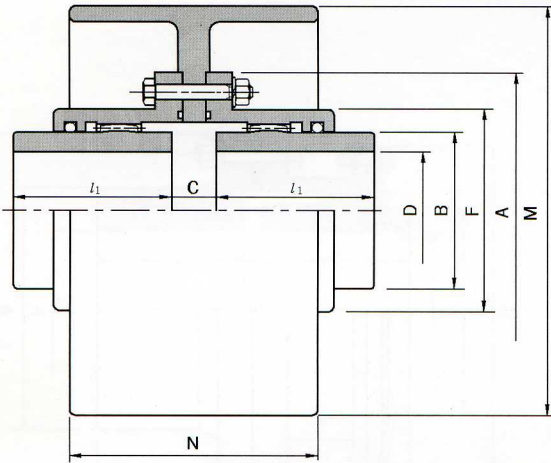
Jac-GSL



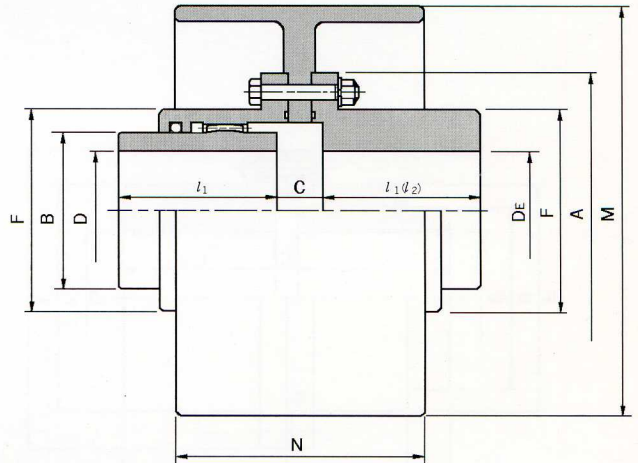
Size	HP Per 100 rpm	Max. Speed (rpm)	Basic Torque (kg · cm)	Bore D(mm)			Dimensions(mm)								Cplg wt(kg)	Grease wt(kg)	
				Max		Min	A	E	l ₁	B	F	K	l ₂	G			C
				D _E	D												
10GS	12	8,000	8,594	60	48	13	116	87	43	69	84	39	40		4	4.5	0.02
15GS	27	6,500	19,337	75	60	19	152	99	49	86	105	48	46		4	9.1	0.04
20GS	50	5,600	35,810	92	73	25	178	124	62	105	126	59	58		4	15.9	0.07
25GS	90	5,000	64,458	111	92	32	213	156	77	131	155	72	74		5	27.2	0.12
30GS	150	4,400	107,430	130	105	38	240	184	91	152	180	84	88		5	43.1	0.18
35GS	230	3,900	164,726	149	124	51	279	213.5	106	178	211	98	102		5.5	61.2	0.27
40GS	350	3,600	250,670	171	146	64	318	243	121	210	245	111	115		7	99.8	0.47
45GS	480	3,200	343,776	194	165	76	346	274	135	235	274	123	131		8	136.1	0.57
50GS	650	2,900	465,530	222	178	89	389	309	153	254	306	141	147		9	195.0	0.91
55GS	850	2,650	608,770	248	197	102	425	350	168	279	334	158	173		9	263.1	1.13
60GS	1,100	2,450	787,820	267	222	114	457	384	188	305	366	169	186		10	324.3	1.70
70GSL	1,600	2,150	1,145,920	305	254	89	527	454	221	343	425	196	220	517	13	508.0	2.27
80GSL	2,100	1,750	1,504,020	343	279	102	591	511	249	356	451	243	249	572	13	698.5	4.99
90GSL	2,850	1,550	2,041,170	381	305	114	660	566	276	394	508	265	276	641	14	984.5	6.35
100GSL	4,000	1,450	2,864,800	406	343	127	711	626	305	445	530	294	305	699	16	1251.9	7.71
110GSL	5,500	1,330	3,939,400	445	387	140	775	682	333	495	584	322	333	749	16	1637.5	9.07
120GSL	7,000	1,200	5,013,400	495	425	152	838	722	353	546	648	341	353	826	16	2077.5	10.89

NOTE) 아래 그림에 표기된 상세 Dimension은 12~15페이지에 기재 되어 있는 해당 표준 Size규격과 동일함.

Brake Drum Type



Jac-SSMB
Jac-GDBW



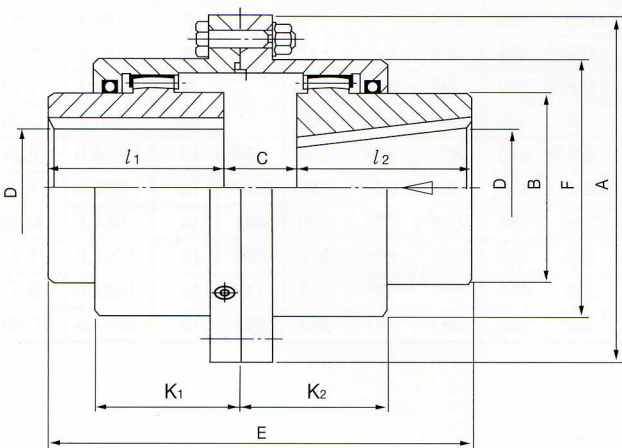
Jac-SEMB
Jac-GSBW

Jac-SSMB, SEMB					DRUM SIZE		Jac-GDBW, GSBW						
Size	A	C	D	DE	M	N	DE	D	C	l ₁	l ₂	A	Size
			max/min	max/min			max/min	max/min					
140	63	24	56/22	63/22	200	100	75/19	60/19	16	49	46	152	15G
160	80	26	65/22	75/22			95/25	73/25	16	62	58	178	20G
180	90	29	75/32	80/32	250	125	113/32	92/32	19	77	74	213	25G
200	100	29	85/32	95/32									
224	112	31	100/42	105/42	315	160	130/38	105/38	19	91	88	240	30G
250	125	31	115/42	125/42									
280	140	31	135/42	150/42	355	180	149/51	124/51	25	106	102	279	35G
315	160	41	160/100	180/100	400	200	171/64	146/64	25	121	115	318	40G
355	180	43	180/125	200/125	450	224	194/76	165/76	27	135	131	346	45G
400	200	49	200/140	236/140	500	250	222/89	178/89	33	153	147	389	50G

* 'M' 과 'N' 의 치수는 설치장소의 공간에 따라 변할 수 있음.

* 'M' and 'N' are variable according to the space of machine.

Mill Motor Type



Jac-SMM

Size	DIMENSIONS						GD ² (kg, m ²)
	OUTSIDE Dia A	E	l ₁	l ₂	C	K ₁	
SMM 125(a)	157	50	75	32	43	66	0.038
SMM 125(b)	172	50	90	32	43	66	0.039
SMM 140	185	63	90	32	47	72	0.066
SMM 160	220	80	100	40	52	82	0.123
SMM 180	246	90	115	41	56	87	0.208
SMM 200	260	100	115	45	61	93	0.336
SMM 224	289	112	125	52	65	102	0.637
SMM 250	305	125	125	55	74	105	1.09
SMM 280(a)	339	140	140	59	82	115	2.09
SMM 280(b)	339	140	150	49	82	115	2.13
SMM 315(a)	386	160	170	56	98	128	4.27
SMM 315(b)	421	160	185	76	98	143	4.42
SMM 355	491	180	235	76	108	155	7.79

The detail dimensions on the above figures are the same as our original standard size(SSM, SEM, GD, GS)on the page 12 through page 15.