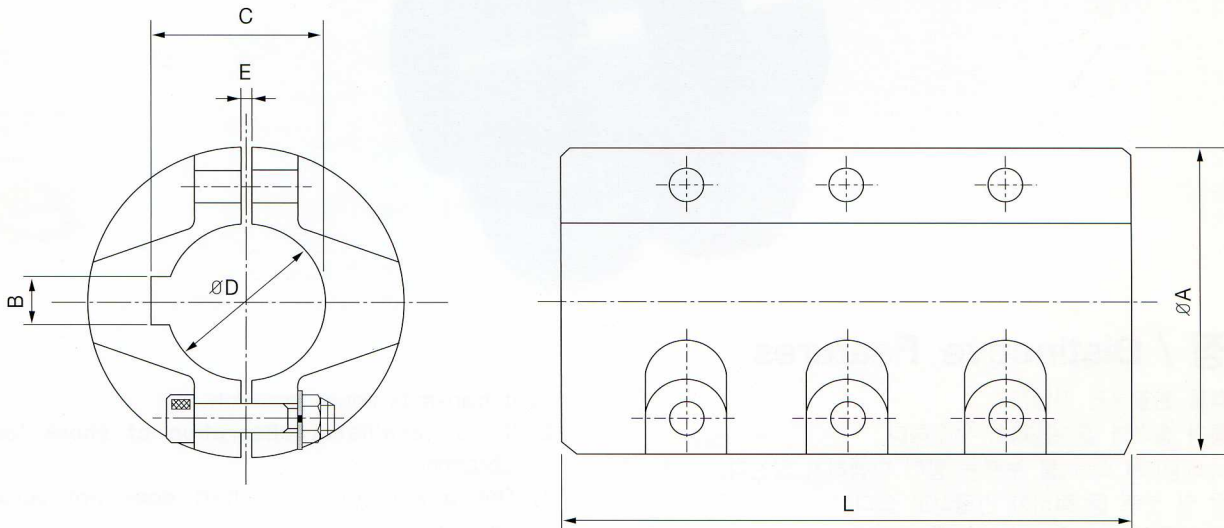


## 표준품 규격 및 전동능력 / Dimensions & technical Data



SIZE	Bore Ø D(H8)	A	L	KEY WAY			E	BOLT	TORQUE (kg.m)	WEIGHT (kg)
				B(js9)	C	KEY(b × h)				
J-M25	Ø 25H8	Ø 50	88	7	28.0	7 × 7	1.6	4-M6 × 30L	22	1.0
J-M30	Ø 30H8	Ø 60	105	7	33.0	7 × 7	1.6	4-M6 × 30L	30	1.5
J-M35	Ø 35H8	Ø 70	120	10	38.5	10 × 8	1.6	4-M8 × 35L	40	2.5
J-M40	Ø 40H8	Ø 80	140	10	43.5	10 × 8	1.6	6-M10 × 40L	55	3.9
J-M45	Ø 45H8	Ø 90	160	12	48.5	12 × 8	1.6	6-M10 × 45L	70	5.6
J-M50	Ø 50H8	Ø 100	176	12	53.5	12 × 8	2.0	6-M10 × 45L	95	7.2
J-M55	Ø 55H8	Ø 110	180	15	60.0	15 × 10	2.0	6-M10 × 45L	120	9.6
J-M60	Ø 60H8	Ø 120	184	15	65.0	15 × 10	2.0	6-M12 × 50L	150	11.6
J-M65	Ø 65H8	Ø 130	200	18	69.4	18 × 11	2.5	6-M12 × 50L	205	12.2
J-M70	Ø 70H8	Ø 140	214	18	74.4	18 × 11	2.5	6-M14 × 55L	245	15.7
J-M75	Ø 75H8	Ø 150	240	20	79.9	20 × 12	2.5	6-M14 × 55L	300	20.6
J-M80	Ø 80H8	Ø 160	264	20	85.9	20 × 12	2.5	6-M16 × 55L	360	21.5
J-M85	Ø 85H8	Ø 178	278	24	93.0	24 × 16	2.5	6-M16 × 55L	435	27.4
J-M90	Ø 90H8	Ø 180	292	24	98.0	24 × 16	3.0	6-M18 × 75L	530	30.0
J-M95	Ø 95H8	Ø 190	300	24	103.0	24 × 16	3.0	6-M18 × 75L	615	37.5
J-M100	Ø 100H8	Ø 200	320	28	106.4	28 × 16	3.0	6-M18 × 75L	690	42.0
J-M110	Ø 110H8	Ø 210	360	28	116.4	28 × 16	3.0	6-M18 × 75L	900	56.0
J-M120	Ø 120H8	Ø 279	410	32	127.4	32 × 18	3.0	8-M20 × 75L	1,100	85.0