

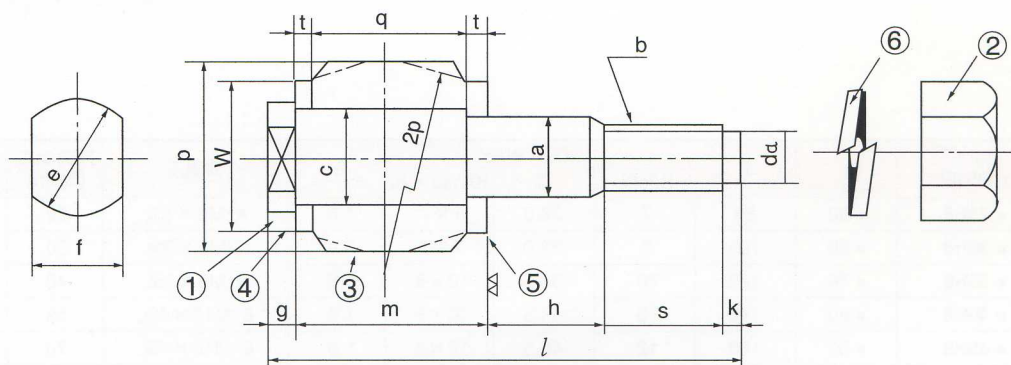
# FLANGE FLEXIBLE COUPLING



## 특징 / Distinctive Features

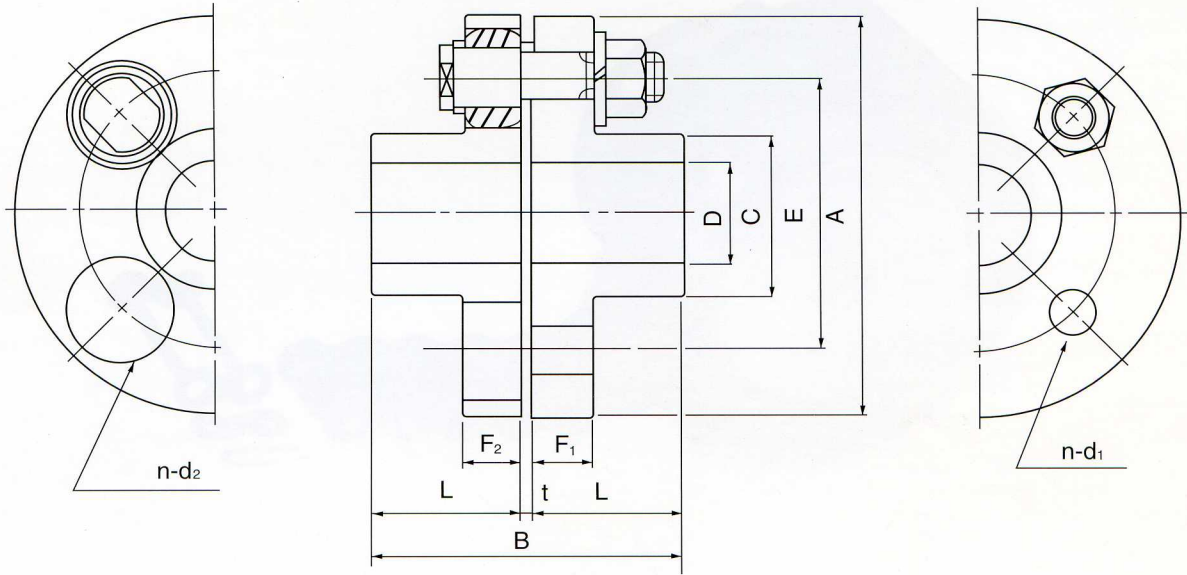
- |   |   |
|---|---|
| <ul style="list-style-type: none"> <li>1) 동력을 원활하게 전달한다.</li> <li>2) 진동과 충격의 흡수능력이 우수하다.</li> <li>3) Coupling에서 Shaft를 누르는 힘이 발생하지 않는다.</li> <li>4) 장착 및 분해 등 정비가 간단하고 쉽다.</li> <li>5) 구조가 간단하고 유연성이 탁월하다.</li> </ul> | <ul style="list-style-type: none"> <li>1) It transmits power smoothly.</li> <li>2) It has available absorption of shock load and vibration.</li> <li>3) The power pressing shaft does not occur from coupling.</li> <li>4) Easy and simple installation and maintenance.</li> <li>5) Simple construction and complete flexibility.</li> </ul> |
|---|---|

## Bolt 치수표/Bolt Dimensions



NO	① Bolt												③ Bush			④ Plan washer			⑤ Plain washer		
	a	b	c	da	e	f	g	m	h	s	k	l	c	p	q	c	w	t	a	w	t
1	8	M8	9	5.5	12	10	4	17	17	12	2	50	9	18	14	9	14	3	8	14	3
2	10	M10	12	7	16	13	4	19	19	14	2	56	12	22	16	12	18	3	10	18	3
3	14	M12	16	9	19	17	5	21	21	16	3	64	16	31	18	14	25	3	14	25	3
4	20	M20	22.4	15	28	24	5	26.4	24.6	25	4	85	22.4	40	22.4	22.4	32	4	20	32	4
5	25	M24	28	18	34	30	6	32	32	27	5	100	28	50	28	28	40	4	25	40	4
6	28	M24	31.5	18	38	32	6	44	44	31	5	116	40	56	40	31.5	45	4	28	45	4
7	35.5	M30	40	23	48	41	8	61	61	38.5	6	150	56	71	56	40	56	5	35.5	56	5

## 표준품 규격 / Dimensions



Size	HP Per 100 (rpm)	Max Speed (rpm)	Basic torque (kg · cm)	Bore D(mm)		Dimensions(mm)								Bolt Hole			Cplg wt(kg)
				max.	min.	A	B	C	E	F <sub>1</sub>	F <sub>2</sub>	L	t	n	d <sub>1</sub>	d <sub>2</sub>	
90A	0.07	4,000	50	20	—	90	59	35.5	60	14	14	28	3	4	8	19	1.4
100A	0.14	4,000	100	25	—	100	74	42.5	67	16	16	35.5		4	10	23	2.1
112A	0.23	4,000	161	28	16	112	83	50	75	16	16	40		4	10	23	2.7
125A	0.35	4,000	250	28	18	125	93	56	85	18	18	45		4	14	32	3.5
140A	0.67	4,000	501	38	20	140	103	63	100	18	18	50		6	14	32	4.9
160A	1.56	4,000	1,120	45	25	160	115	80	115	18	18	56		8	14	32	6.8
180A	2.24	3,500	1,607	50	28	180	129	90	132	18	18	63		8	14	32	9.6
200A	3.50	3,200	2,503	56	32	200	146	100	145	22.4	22.4	71	4	8	20	41	13.2
224A	5.59	2,550	4,003	63	35	224	164	112	170	22.4	22.4	80		8	20	41	18.4
250A	8.80	2,300	6,302	71	40	250	184	125	180	28	28	90		8	25	51	26.0
280A	14	2,050	10,032	80	50	280	204	140	200	28	40	100		8	28	57	36.5
315A	22	1,800	16,071	90	63	315	228	160	236	28	40	112		10	28	57	49.1
355A	35	1,600	25,032	100	71	355	255	180	260	35.5	56	125	5	8	35.5	72	74.9
400A	56	1,400	40,031	110	80	400	255	200	300	35.5	56	125		10	35.5	72	94.3
450A	88	1,350	68,018	125	90	450	285	224	355	35.5	56	140		12	35.5	72	127.8
560A	140	1,150	100,030	140	100	560	325	250	450	35.5	56	160		14	35.5	72	206.3
630A	223	1,000	160,028	160	110	630	365	280	530	35.5	56	180		18	35.5	72	277.0

※ Coupling 중량은 내경가공이 없는 상태의 중량임

※ Coupling Weight, Without Bore machining.